

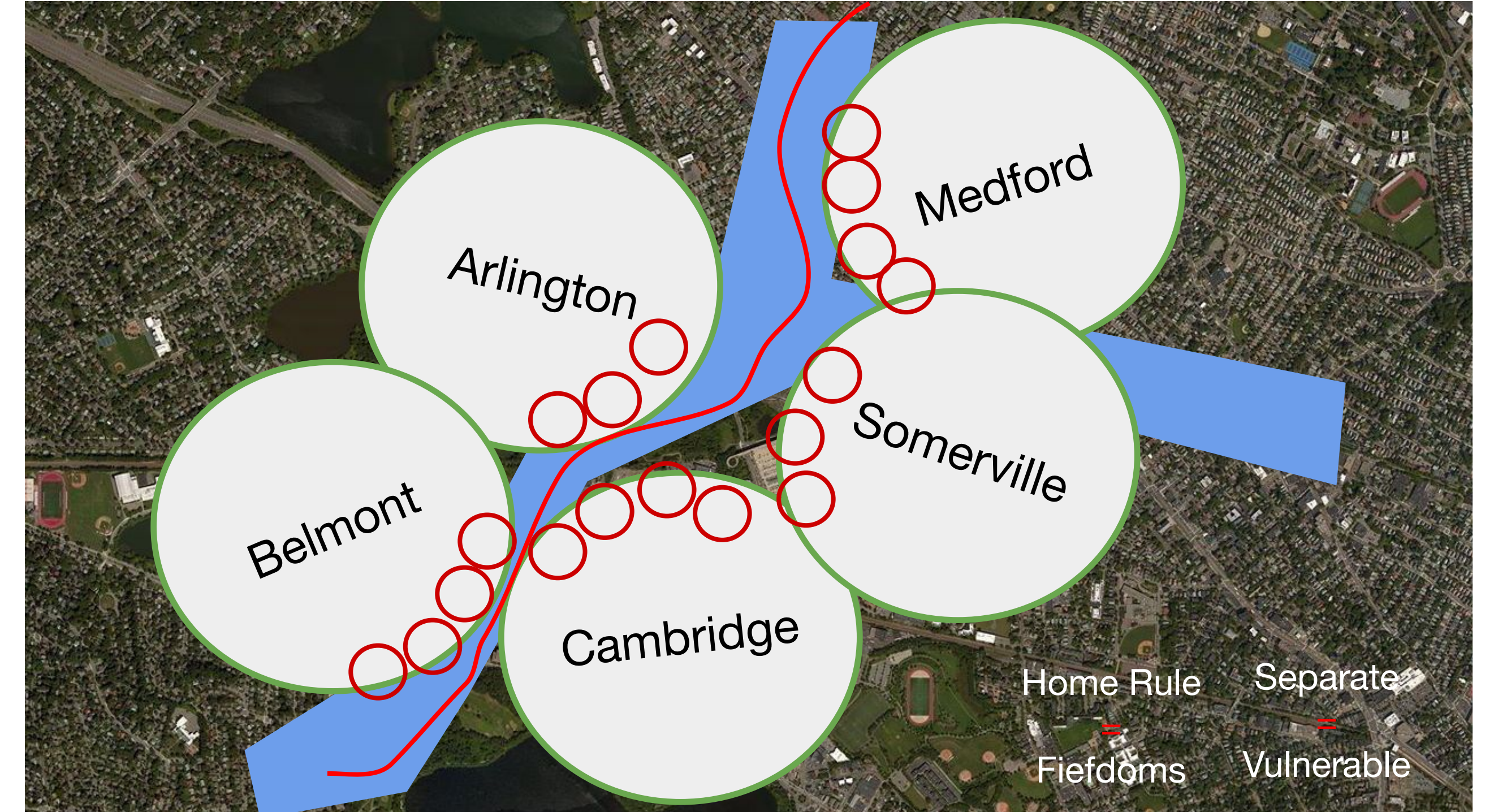
Knitting the Alewife

Doug Brown, Sarah Howard, Patricia Schroeder Loheed, Steven Nutter

FROM VULNERABLE TO VIBRANT

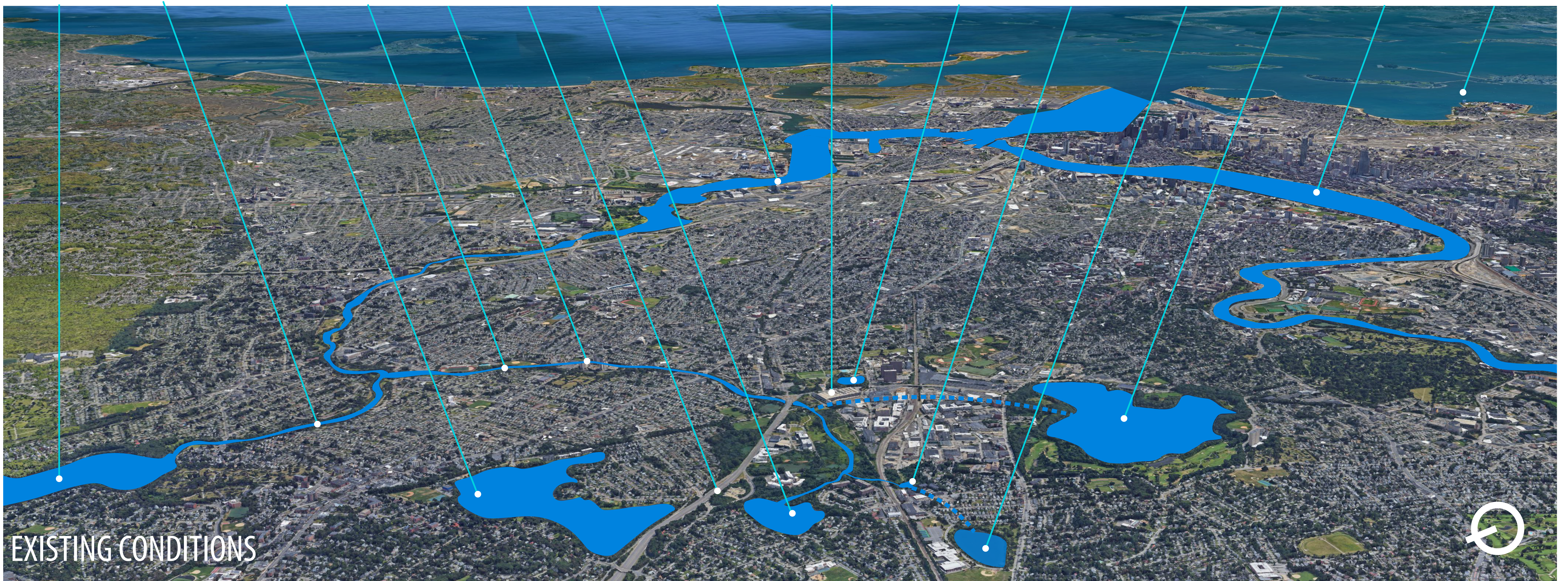
Resilience affects us all and touches on every aspect of our lives.

It affects our health and safety, our ability to move around the city, our capacity to access basic needs such as housing and food, our collective ability to respond to emergencies such as blizzards and hurricanes, how we develop our communities and utilize open space, and how we relate to and partner with each other, ecosystems, and other animals and plants.

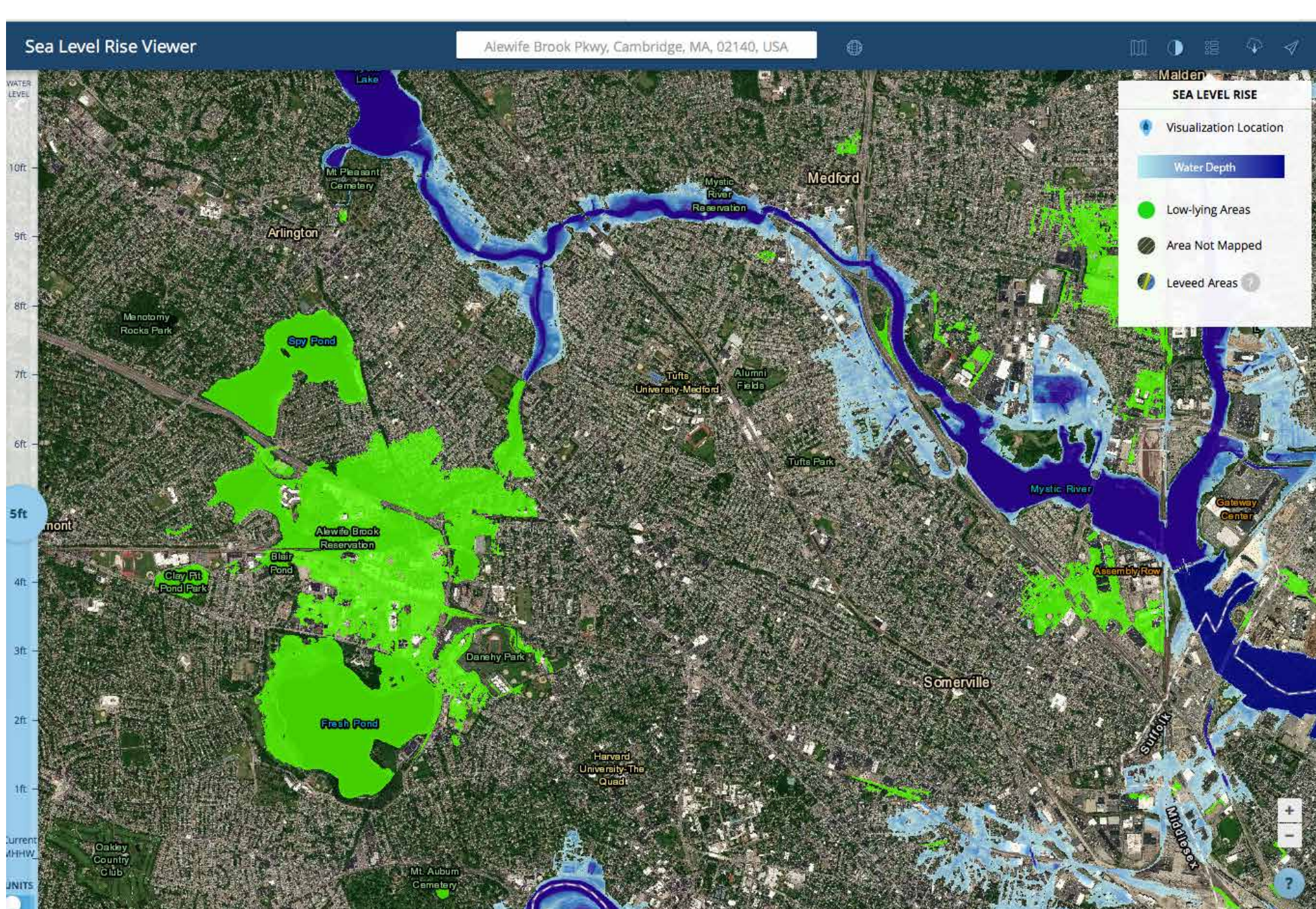


SITE LOCATION

Mystic Lakes Mystic River Spy Pond Alewife Brook Rt16 Rt2 Little Pond Mystic River MBTA Station Jerrys Pond Blair Pond Clay Pit Pond Fresh Pond Charles River Boston Harbor



SEA LEVEL RISE 2050-2070



Resilience is embedded and enabled by social and community capital.

ARLINGTON PLANNING OFFICE: SPY POND HAS ARSENIC CONTAMINATION FROM 19TH CENTURY INDUSTRIES THAT PREEMPTS WATER CONTACT USES, BUT TOWN HAS IMPLEMENTED SHORELINE AND STORMWATER IMPROVEMENTS AT PARK ADJACENT TO POND AND MINUTEMAN TRAIL.

NORTHEAST ARLINGTON PUBLIC HOUSING RESIDENT (2018): MY BASEMENT HAS BEEN FLOODED BY THE ALEWIFE THREE TIMES IN THE LAST COUPLE YEARS.

FAR ECO-CAMPER PERFORMING WILDLIFE INVENTORIES: ERMINE WERE OBSERVED IN POND NEAR MBTA STATION.

AT MINUTEMAN TRAIL'S 25TH ANNIVERSARY, IT WAS THE MOST HEAVILY USED TRAIL IN THE US; WICKED LOCAL ARLINGTON REPORTED FEBRUARY 2018 STORM TRAPPED USERS ON HOMEWARD COMMUTE.

MBTA REAL ESTATE DIRECTOR: A FEBRUARY 2018 FLOOD SURGE PUT 1.5 FEET OF WATER IN PARKING GARAGE AND CAUSED CLOSURE.

NORTH CAMBRIDGE RESIDENT: THE FEMA FLOODPLAIN BOUNDARY IS RIGHT AT THE BOTTOM OF MY BACK PORCH STEPS.

FRIENDS OF ALEWIFE RESERVATION (FAR): HUNDREDS OBSERVED AND PHOTOGRAPHED NESTING RED-TAILED HAWKS AND HATCHLINGS AT FRESH POND OFFICE BUILDING; FAR SPONSORED ANTI-RODENTICIDE CAMPAIGN.

EAST ARLINGTON RESIDENT AT ALEWIFE RESILIENCE SYMPOSIUM (2018): AS AN MBTA COMMUTER, I WALK TO THE T STATION AND ENJOY THE WALK AND OPEN SPACE.

ALEWIFE CONCERNED CITIZENS: A RETEST OF ASBESTOS AT W.R. GRACE SITE FOUND 12-20% IN TOP 3" OF TESTED SOILS.

BELMONT'S WINN BROOK OUTFLOW FROM UPSTREAM CLAY PIT POND IS LIKELY SOURCE OF E COLI CONTAMINATION COMING INTO BLAIR POND AND LITTLE RIVER, CAUSING A D- WATER QUALITY RATING.

RINDGE TOWERS RESIDENT: I ENJOY JERRY'S POND, BUT I NEEDS A WIDER WALK AND BETTER CARE.

BELMONT COMMUNITY PATH ADVISORY BOARD: BELMONT IS PLANNING A PATH ALONG RR ROW FROM BELMONT HIGH SCHOOL AND CLAY PIT POND TO ALEWIFE.

EARTHOS CONVERSATIONS WITH RINDGE TOWERS RESIDENTS/FRIENDS OF JERRY'S POND: NEIGHBORS AND COMMUTERS FIND ALEWIFE SHOPPING CONVENIENT PLUS LIKE RESTAURANTS AND TAKE OUT.

AUTO COMMUTER: RUSH HOUR TIE-UPS ON ROUTE 2 AND ROUTE 16 CAUSE STOP-AND-GO TIE-UPS FOR 45 MINUTES.

To create resilience, it takes a rather large village—all of us!

Knitting the Alewife is building a learning community of community actors, municipal and state governments, university researchers, and local and regional nonprofits to collaboratively accomplish the following:

- understand the Alewife as a dynamic eco-social system
- find shared meaning in climate data
- explore and evaluate alternative futures
- co-implement a knitting demonstration project

We are focusing on building the social and political infrastructure and frameworks that can support co-creation, knitting design activities, which are currently missing and/or poorly developed in the Alewife District. We have learned that without these, design projects are implemented by a few, without realizing full co-creation potential.